

# LASCOD



# LEADERSHIP





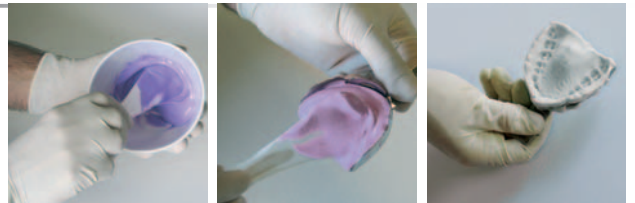
# Leadership: be on top.

Since **KROMOPAN** was created it has been an incredible break through in dentistry allowing the impression taking with high quality and easy check through the working phases.

High precision, good elasticity, very short setting-time and long dimensional stability grant a perfect and accurate dental impression in order to make any prosthesis and functional intervention.

## easy to use

Kromopan and Alginor-ortho are the Lascod chromatic alginates. The chromatic phase indicator helps the preparation of the impression tray work regardless of enviromental conditions and of temperature and hardness of the used water.



*Kromopan chromatic phases*



*Alginor chromatic phases*

<b>Working time</b> (23°) <i>including mixing time</i>	<b>Minimum</b> <b>time in mouth</b> (37°)
--	---

CHROMATIC		
<b>KROMOPAN 1</b>	<b>1' 45"</b>	<b>30"</b>
<b>KROMOPAN 2</b>	<b>2' 45"</b>	<b>30"</b>
<b>ALGINOR</b>	<b>1' 45"</b>	<b>30"</b>
NON CHROMATIC		
<b>MILLENIUM</b>	<b>1' 45"</b>	<b>30"</b>
<b>ALGINELLE</b>	<b>1' 45"</b>	<b>30"</b>

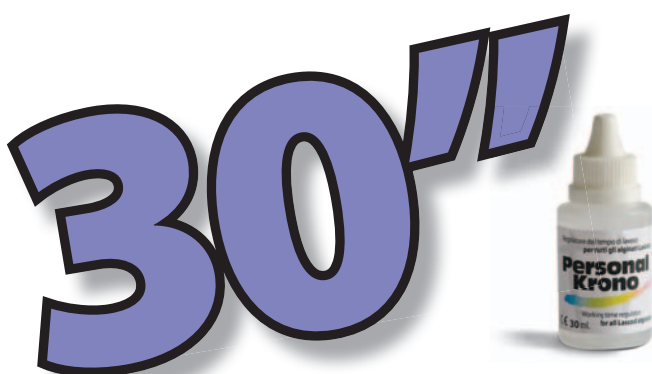
## perfect control of times

The long working time allows to manipulate the product with extreme calm.

## extra rapid setting time

The time in mouth is only 30" to reduce at minimum patient's discomfort.

In conditions of high environmental temperature or hardness of water, the working time is dramatically reduced. Every drop of the regulator liquid Personal Krono, added to a scoop of water used for mixing, allows to extend the working time of 20" **without changing the alginate features and the time in mouth.**

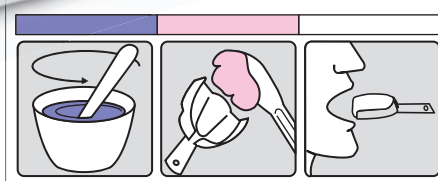




KRM302  
20x450g

# chromatic

- Study models
- Antagonist
- Removable and fixed prosthesis
- Temporary crowns and bridges



Purple phase: mixing  
 Pink phase: impression tray loading  
 White phase: insertion in mouth

	Type I	Type II
Working time (23°) including mixing time	1' 45"	2' 45"
Minimum time in mouth (37°)	30"	30"
Reproduction of details (µm)	20	20
Elastic recovery (%)	95.5	95.5
Dimensional stability	100 h	100 h
Flavour	spearmint	spearmint
Colour	white	white



KRT302  
20x450g

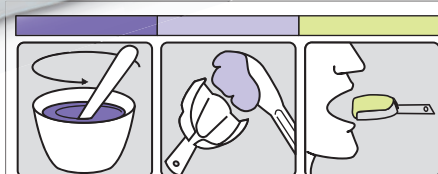
# LAS



KOR302  
20x450g

# chromatic

- Study models
- Orthodontic impressions



Purple phase: mixing  
 Cyclamen phase: impression tray loading  
 Green phase: insertion in mouth

**Specific for orthodontic impressions.**

It has the highest degree of elasticity and resistance to tear, ideal to highlight details in impressions with significant undercuts and brackets.

Working time (23°) including mixing time	1' 45"
Minimum time in mouth (37°)	30"
Reproduction of details (µm)	20
Elastic recovery (%)	96.2
Dimensional stability	100 h
Flavour	mint
Colour	green

# orthodontics

# non chromatic

New generation alginate and top quality level product specific for high precision impressions with details definition up to 15 $\mu$ . It's the ideal solution for any use where detail definition is essential for perfect prosthesis realizations.

Working time (23°) including mixing time	1' 45"
Minimum time in mouth (37°)	30"
Reproduction of details ( $\mu$ m)	15
Elastic recovery (%)	96.2
Dimensional stability	100 h
Flavour	strawberry
Colour	pink

KHQ302  
20x450g



**15 $\mu$ m** maximum precision

# COD

- High precision impressions in removable and fixed prosthesis
- Temporary crowns and bridges
- Position impressions
- Antagonist models
- Study models

# non chromatic

Non chromatic alginate with the same technical features and same precision as Kromopan, indicated for the same applications: removable and fixed prosthesis antagonists, temporary prosthesis impressions, preliminary models for metal frameworks and orthodontics.

Working time (23°) including mixing time	1' 45"
Minimum time in mouth (37°)	30"
Reproduction of details ( $\mu$ m)	20
Elastic recovery (%)	95.5
Dimensional stability	100 h
Flavour	spearmint
Colour	orange

KAL102  
20x450g



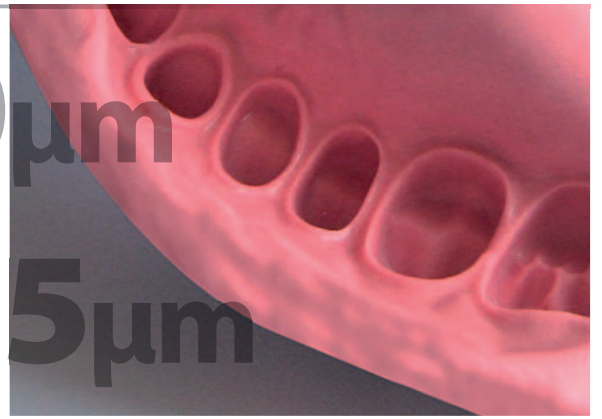
- Study models
- Antagonist models
- Removable and fixed prosthesis
- Temporary crowns and bridges

# maximum precision

20  $\mu\text{m}$

15  $\mu\text{m}$

All Lascod alginates show a high details reproduction. This is an essential requirement to realize accurate models that improve the realization of the prosthesis model.



# elasticity and resistance to tear

High elasticity and resistance to tear allow a perfect details reproduction in presence of significant undercuts.



# agreeable aroma



Lascod alginates are intentionally formulated with a slight flavour in order to reduce at minimum terms salivations and emetic reflex.

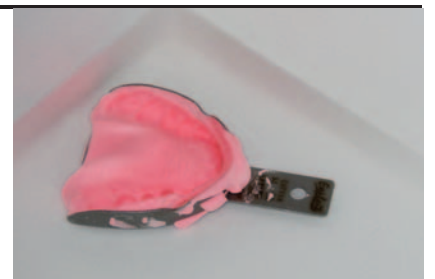
# high dimensional stability



If kept in a sealed plastic bag, without adding water, or wet paper or cotton, Lascod alginate impressions are inalterable for over 100 hours.

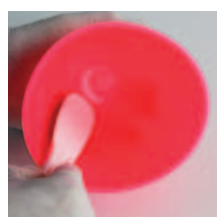
# inalterable during disinfection

All impressions taken with Lascod alginates can be disinfected with specific products following manufacturers' instructions about dosage/proportions, temperature, submersion timings, solution substitution and disposal without altering the characteristics of the material.




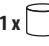

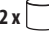


# tips and more...

**1** We suggest to preserve the alginate in its original bag roll up and closed with a simple clip. If you wish to transfer the material in a plastic container, remember to wash it frequently (no detergents-soaps) and to wipe it properly in order to avoid the contamination due to old dust residue. The material hasn't to be exposed to direct sunlight or near sources of heat, should be stored in a dry place to extend product shelf-life.



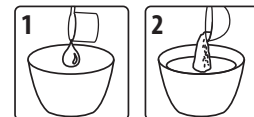
**2** Carefully wash your instruments (mixing cup, spatula, trays). Do not use instruments with residuals.

		
	<b>20 ml.</b>	<b>9 g.</b>
<b>1 x</b>		<b>1 x</b>
	<b>40 ml.</b>	<b>18 g.</b>
<b>2 x</b>		<b>2 x</b>

**3** Water dosage: for every scoop of powder is necessary to pour one water scoop. Control of the water level has to be carried out by placing the measuring scoop at eye level. Use of deionized water is recommended.

Powder dosage: take the alginate without compressing the powder, remove excess by passing the spatula on the measuring scoop.

**4** Pour water first and then the powder inside the cup. This forethought will improve the quality of the mixture minimizing lumps and air bubbles.

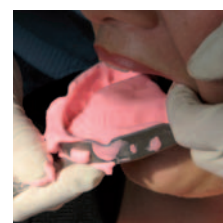


**5** Mix manually the alginate for 45". If you are using a mechanical mixer for 8"-10".



**6** During the loading of the impression tray insured that the material comes out of the perforations. This precaution will increase the retention.

**7** After setting extract the impression tray with a single movement in direction of the teeth axis.



**8** Do not forget to rinse thoroughly with running water and disinfect the impression before storing.

**9** Store the impression in a sealed plastic bag, without adding water, wet paper or cotton.



## accessories



**PERFORATED**  
EXK603 (S-M-L)  
EXK605 (XS-S-M)

**NON PERFORATED**  
EXK604 (S-M-L)  
EXK606 (XS-S-M)



MSG020 (20 couples)  
MSG500 (500 couples)



ALC100



TUB001



ZLC001



ZLC003



CLP001



SLB100

# LASCOD

For further information activate the QR Code reader on your smartphone.

