



LASCOD

TEMPORARY & PERMANENT CEMENTS



Temporary and permanent cements

Our research and development, along with the commitment to constantly improve our products, have enabled the formulation of ours temporary cements as LITARK and FILLFIX as well as definitive cements KROMOGLASS type 2 and 3, designed to meet the needs and preferences of our customers.



LITARK temporary filling cement



No material preparation required!

The product does not require manipulation before use

No cavity drying!

The dentist does not need to dry the cavity before application



LITARK bonds extremely well with the cavity surfaces guaranteeing high non-permability and a mastication resistant stable filling. LITARK sets rapidly when in contact with saliva. During the setting process the material does not release any heat avoiding unpleasant pulp thermal-shocks. The product's hardness after setting is an additional guarantee of resistance during mastication.



biocompatibility

LITARK's formulation does not cause oral-cavity mucosa or pulp allergic reaction. It is perfectly compatible with tooth preparation materials such as gutta-percha, flows, calcium hydroxide, etc. LITARK is a eugenol-free product and a guarantee against tooth sensitivity and allergic reactions.

LITARK's color selection offers an aesthetically acceptable shade even with a temporary filling cement.

Easy to remove!

It is very easy to remove LITARK and all residuals with a hand instrument or a rotatory tool

ZFE 005



FILLFIX temporary cement

FILLFIX is a zinc oxide temporary cement with or without eugenol for crown, bridges, inlay and onlay. Our research laboratories and new products development experts engineered the best possible combination of raw materials and manufacturing technology. LASCOD innovative temporary cement delivers efficient quality to the dental clinic. FILLFIX is competitively priced in order to offer you the price/quality ratio you have been waiting for.



what you were waiting for!



with
eugenol



without
eugenol



easy
to use

Temporary cementing of oral prosthetic apparatuses has never been so easy. FILLFIX micronized granulometry allows easy mixing and an ultra-thin film preparation for easy application.

LASCOD

right on time



FILLFIX long enough working time eases your preparation.
After insertion in the oral cavity, the product sets quickly making the most of yours and your patient's available time.



	Fillfix with eugenol	Fillfix without eugenol
Mixing ratio	1:1 vol.	1:1 vol.
Mixing time*	40 - 60 sec.	40 - 60 sec.
Working time* (after the mixing time)	1 - 2 min.	1 - 2 min.
Setting time**	5 - 6 min.	8 - 10 min.

* tests conducted at 12°C+/-1° and relative humidity 50% +/-5% (optimal conditions).

** test conducted at 37°C+/-1° and relative humidity >95%.
Higher temperature and humidity will reduce mixing and working time.



zero solubility

FILLFIX zero solubility is a guarantee for stable cementing with a low risk of seepage.

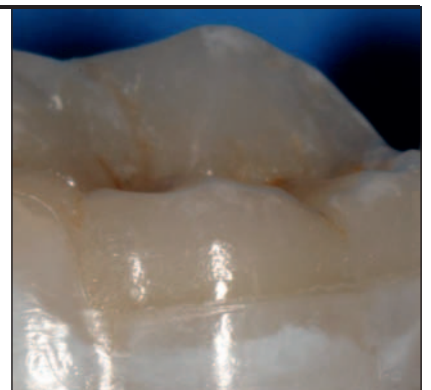
a clean job

Before...

Position the prosthesis and wait for the material to set.
FILLFIX in excess is easily removed.

After...

Although FILLFIX is a stable cement over time, it is extremely easy to remove your oral prosthetic apparatus when deemed necessary.
FILLFIX ultra-thin film will not stick to the stump and remain on the crown or bridge internal surface.





KROMOGLASS: glass ionomer water based cements

2

KROMOGLASS 2



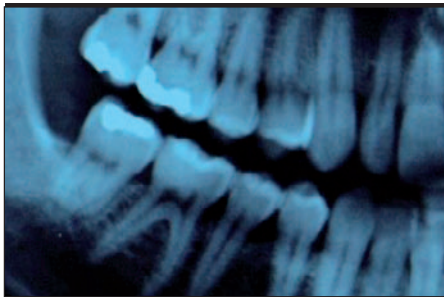
KROMOGLASS 2 is a water based glass ionomer cement (mixable with water), formulated for deciduous teeth class 1 fillings, repairing cuneiform defects, erosions of enamel and roots at the neck of the tooth, class 3 permanent fillings, class 5 fillings, fissures filling, support filling for crown and bridges. Thanks to the excellent chemical bonding and adhesive properties KROMOGLASS 2 does not require the preparation of retention points. Optimal consistency when applying, fast setting, easy to touch up, good aesthetic results and high resistance to abrasion and compression are all together a guarantee of successful long lasting applications.

3

KROMOGLASS 3

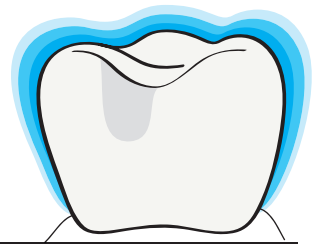


KROMOGLASS 3 is a water based glass ionomer cement (mixable with water), formulated for permanent cementing of crown and bridges., inlays, onlays, and orthodontic bands. Cementing of ceramic restorations (silicate ceramic, zircon oxide, aluminum oxide). KROMOGLASS 3 is a micro-fine cement with extraordinary adhesiveness to o enamel and dentine, ultra-thin film (20-25 µm) Thanks to the no-sticky consistency it is very easy to apply. Zero dimensional variation , stable expansion setting, high resistance to compression and low solubility are guarantee of accurate and long lasting cementation applications.



radiopaque

Perfectly radiopaque Kromoglass eases controls and subsequent diagnoses.



fluoride release

Long term high percentage fluoride release prevents from the risk of new caries.

low thermal
reaction/sensitivity

extraordinary
adhesive
properties

	KROMOGLASS 2	KROMOGLASS 3
Mixing time*	40 sec.	30-40 sec.
Working time including mixing time*	3 min.	3,5 min.
Setting time in mouth	2 min.	5 min.
Resistance to compressive strength	150-170 MPa	90-130 MPa
Water solubility	0,2-0,4%	0,3-0,9%
Film thickness	-	20-25 µm

* Tested at 23°C

packaging



LTK700

LITARK
Temporary filling cement

6 x 10 g sticks (60 g)



FFX010

FILLFIX non eugenol
Zinc oxide/non eugenol temporary cement

50 g Base + 15 g Catalyst + Mixing pad



FFX015

FILLFIX
Zinc oxide/eugenol temporary cement

50 g Base + 15 g Catalyst + Mixing pad



KGL525

KROMOGLASS 2
Water-mixable glass ionomer cement for filling

20 g Powder



KGL053

KROMOGLASS 3
Water-mixable glass ionomer cement for luting

35 g Powder

CEMGB4 - OTT. 2011

accessories

Selected from our ZEFFIRO catalogue and surely useful for use of our cements.



ZFK 011



ZFG 036



ZFJ 001



ZFJ 003



ZFJ 005

