



Bone Graft Practice Model

[IMP1008-L-SP]

- Maxillary jaw model for comprehensive training ranging from implant insertion to fixture fenestration practice
- Anterior region duplicates bone defect shape which allows GBR practice
- Basic implant insertion is possible in the right anterior region intercalary defect area
- Ridge expansion practice in the anterior region is possible

Gingiva	gingiva with periosteum for use in incision-suture
Bone Material	duplicates type II (2 layered construction)
Tooth model	1-piece form construction (part of jaw model)

Training Method		
Incision	<input type="checkbox"/>	Lateral window technique
Relaxation incision	<input type="checkbox"/>	Osteotome
Full-thickness flap	<input type="checkbox"/>	GBR
Incision- gingival ablation	<input type="checkbox"/>	Bone graft
Suture	<input type="checkbox"/>	Ridge expansion
Drilling	<input type="checkbox"/>	Immediate implant placement
Implant insertion	<input type="checkbox"/>	Surgical guide plate
Alginate impression	<input type="checkbox"/>	Fabrication of superstructure



Bone Graft Practice Model

[IMP1009-L-SP]

- Model using special soft tissue for relaxation incision training
- Model for implant insertion in the right posterior region and GBR in the left jaw
- Model for practicing immediate implant placement
- Model comes with imitation bone placement(2g) and imitation membrane(3 sheets)

Gingiva	gingiva for special relaxation incision
Bone Material	duplicates type II (2 layered construction)
Tooth model	removable anatomic tooth model (tooth #33 only)

Training Method		
Incision	<input type="checkbox"/>	Lateral window technique
Relaxation incision	<input type="checkbox"/>	Osteotome
Full-thickness flap	<input type="checkbox"/>	GBR
Incision- gingival ablation	<input type="checkbox"/>	Bone graft
Suture	<input type="checkbox"/>	Ridge expansion
Drilling	<input type="checkbox"/>	Immediate implant placement
Implant insertion	<input type="checkbox"/>	Surgical guide plate
Alginate impression	<input type="checkbox"/>	Fabrication of superstructure



Implant Comprehensive Practice

[IMP1010-UL-HD]

- Natural bone shape for comprehensive implant practice
- Maxillary jaw model for sinus lift and GBR practice
- Mandibular jaw model for bone graft practice

Bone Material	duplicates type II (2 layered construction)
Tooth model	1-piece form construction (part of jaw model)
Other	Schneiderian membrane

Training Method		
Incision	<input type="checkbox"/>	Lateral window technique
Relaxation incision	<input type="checkbox"/>	Osteotome
Full-thickness flap	<input type="checkbox"/>	GBR
Incision- gingival ablation	<input type="checkbox"/>	Bone graft
Suture	<input type="checkbox"/>	Ridge expansion
Drilling	<input type="checkbox"/>	Immediate implant placement
Implant insertion	<input type="checkbox"/>	Surgical guide plate
Alginate impression	<input type="checkbox"/>	Fabrication of superstructure



Implant Comprehensive Practice (Maxillary Jaw)

[IMP1011-U-SP]

Implant Comprehensive Practice (Mandibular Jaw)

[IMP1012-L-SP]

- 2 implant comprehensive models for flap and drilling practice
- The model materials consist of a 2 layered construction duplicating type II hardness
- Implant socket feature allows you to replace necessary parts and practice repeatedly

Gingiva	gingiva for use in incision-suture
Bone Material	duplicates type II (2 layered construction)
Tooth model	removable anatomic tooth model
Other	Socket type

Training Method		
Incision	<input type="checkbox"/>	Lateral window technique
Relaxation incision	<input type="checkbox"/>	Osteotome
Full-thickness flap	<input type="checkbox"/>	GBR
Incision- gingival ablation	<input type="checkbox"/>	Bone graft
Suture	<input type="checkbox"/>	Ridge expansion
Drilling	<input type="checkbox"/>	Immediate implant placement
Implant insertion	<input type="checkbox"/>	Surgical guide plate
Alginate impression	<input type="checkbox"/>	Fabrication of superstructure

Replacement parts

[Maxillary Jaw]



Implant Socket A
[IMP1013-T-SP]

Parts : #21, #22, #23



Implant Socket B
[IMP1014-T-SP]

Parts : #14, #15, #16, #17



Implant Socket C
[IMP1015-T-SP]

Parts : #21, #22, #23

*Socket C not included in P9-X.1143

[Mandibular Jaw]



Implant Socket D
[IMP1016-T-SP]

Parts : #41, #42, #31, #32



Implant Socket E
[IMP1017-T-SP]

Parts : #44, #45

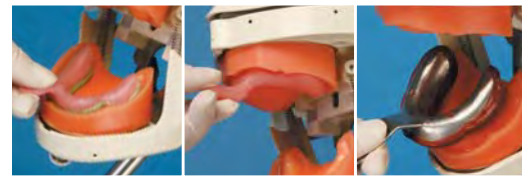


Implant Socket F
[IMP1018-T-SP]

Parts : #34, #35, #36, #37

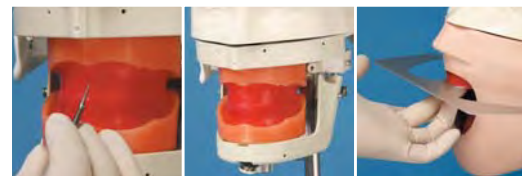
The EDE (Edentulous) Series for mastering the Edentulous Jaw Restorative Area

During full denture fabrication, various techniques for functionally positioning the gingival form, finding the proper vertical dimension of occlusion, and the alignment position of artificial teeth are required. It is essential to comprehensively practice basic techniques in order to understand the usage of various impression materials and the mode of occlusion. The Edentulous Jaw Model Series offers a wide variety of model types to choose from such as models with a soft type gingiva that allows various impression taking methods, and plaster models that are for laboratory practice such as denture teeth alignment.



Impression Taking

The EDE1001-UL-UP-FEM is furnished with a soft type gingiva. To allow various impression taking methods, a hamular notch and palatine foveola are reproduced.



Bite Taking

Laboratory practice such as fabricating bite plates on a standardized model, and attaching Gothic Arch Tracer is possible with the EDE1001-UL-MO. Also, by combining with the optional N Series Wax Rim and EDE1001 models, you can practice bite taking methods using a mannequin.



Artificial Teeth Arrangement

By using the EDE1001-UL-MO plaster model or the plaster model/wax rim combination NC series, you can do artificial teeth arrangement practice using various methods as well as a series of laboratory practice such as polymerization, polishing and selective grinding.



Soft Gingiva Edentulous Model [EDE1001-UL-UP-FEM]

- Edentulous jaw model with a soft type gingiva which is compatible with a wide variety of impression materials such as alginate and silicone
- Bite taking practice can be done on the phantom unit by combining this model with the N Series Wax Rim

Articulator
FE EDE1001-UL-UP-FEM **D** EDE1001-UL-UP-DM
DP EDE1001-UL-UP-DPM **NON** EDE1001-UL-UP-M

Training Method		
Preliminary impression	<input type="radio"/>	Bite taking
Detailed impression	<input type="radio"/>	Artificial teeth arrangement
Muscle trimming	<input type="radio"/>	Denture tooth polymerization
Custom tray fabrication	<input type="radio"/>	Denture tooth setting
Bite plate fabrication	<input type="radio"/>	



Soft Gingiva Edentulous Model [EDE1002-UL-UP-FEM]

- Edentulous jaw model with a soft type gingiva which is compatible with a wide variety of impression materials such as alginate and silicone
- The model duplicates the mucogingival junction allowing a more clinically accurate practice

Articulator
FE EDE1002-UL-UP-FEM **D** EDE1002-UL-UP-DM
DP EDE1002-UL-UP-DPM **NON** EDE1002-UL-UP-M

Training Method		
Preliminary impression	<input type="radio"/>	Bite taking
Detailed impression	<input type="radio"/>	Artificial teeth arrangement
Muscle trimming	<input type="radio"/>	Denture tooth polymerization
Custom tray fabrication	<input type="radio"/>	Denture tooth setting
Bite plate fabrication	<input type="radio"/>	



Plaster Model Mold (Edentulous Jaw) [EDE1001-UL-MO]

- Edentulous jaw rubber mold having the same form as the EDE1001 model
- Each jaw is sold separately

Training Method		
Preliminary impression	<input type="radio"/>	Bite taking
Detailed impression	<input type="radio"/>	Artificial teeth arrangement
Muscle trimming	<input type="radio"/>	Denture tooth polymerization
Custom tray fabrication	<input type="radio"/>	Denture tooth setting
Bite plate fabrication	<input type="radio"/>	



Plaster Edentulous Model with Wax Rim [NC Series]

- Edentulous plaster jaw model combined with the N Series Wax Rim
- 3 different types with varying wax rim arches and angles to choose from
- Designed for artificial teeth arrangement and alignment practice as well as a series of dental laboratory practice such as full denture fabrication

Variation
 Please refer to the table below.
Replacement Parts
 •Wax Rim / NA-various types •Plaster edentulous jaw model / G2-402

Training Method		
Preliminary impression	<input type="radio"/>	Bite taking
Detailed impression	<input type="radio"/>	Artificial teeth arrangement
Muscle trimming	<input type="radio"/>	Denture tooth polymerization
Custom tray fabrication	<input type="radio"/>	Denture tooth setting
Bite plate fabrication	<input type="radio"/>	

Replacement Parts



- Wax Rim [NA Series]**
- Designed to fit the Edentulous Jaw Model Series
 - 3 different types with varying arches and angles to choose from

Table of Wax Rim Types			
	Maxillary	Mandibular	Arch
N4	80°	85°	Standard
N6	75°	75°	Standard
N7	75°	80°	Square

Jaw Functional Skull Model for Mastering the Stomatognathic Function Area.

The Stomatognathic model, based on the skull model, can reproduce jaw movements in 3-dimensional form, so it becomes easier to understand complex protrusive/retrusive, horizontal and vertical jaw movements in relation to the mandibular condyle and dentition.



Jaw Function Skull Model [ANA1001-T]

- 3-dimensionally reproduces various mandibular jaw movements such as protrusive, lateral and vertical movements
- 4 cylinders representing the temporal and masseter muscles are attached to the skull model
- By observing 3-dimensionally instead of using 2-dimensional tools such as illustrations, you can understand mandibular jaw movements much easier

■ Centric Relation



■ Intercuspal Position



■ Lateral Position



■ Protrusive Position



■ Maximal Open Position



Conservative Dentistry



Operative Dentistry

P46

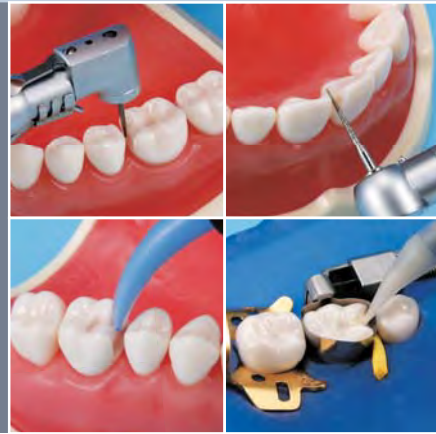


Endodontics Area

P49

The CON (Conservative) Series. A Wide Variation for Mastering the Operative Area.

The first step in learning operative techniques requires understanding things such as how to handle cavity preparation and how to use rubber dam sheets. Therefore, it is essential to comprehensively practice basic techniques. The CON Series has functions that are necessary for learning various operative treatment techniques, and allows you to choose from a wide variety of offerings. Also, by combining with a variety of optional tooth models, you can step up to a more practical technique training.



Cavity Preparation

All models in the series come equipped with tooth models that are ideal to use with air turbine handpieces and contra-angle handpieces, so it is possible to experience the cutting feeling. Also, the jaw models are shaped wide towards the labiobuccal transition area so it is easier to perform anterior area cavity preparation.



Rubber Dam Isolation Technique (Dry-Field)

To allow easy attachment of the rubber dam clamp, the gingiva is lowered and the crown area is exposed. Also, the embrasure is made wider so it is easier to attach matrix bands and wedges.



Impression Taking

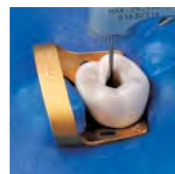
There is a soft type and a hard type model for the gingiva, and models which are fitted with the soft type gingiva allow for a complete training, from gingival retraction to impression taking.

Expanding Training Uses with Optional Tooth Models



Plugging the Filling Material / A25 Series

By combining with tooth models that you have performed cavity preparations on, or with the A25 Series that have pre-prepared cavity preparations, it is possible to do operative practice using various filling materials and matrix bands.



Endodontics / S12

By interchanging to the S12 that have pulp chambers and root canals, you can practice the series of procedures up to root canal filling as you experience the feeling during pulp chamber roof removal and root canal enlargement.



Abutment Fabrication, Post & Core Preparation / A25

Practicing abutment fabrication becomes possible by combining with the A25 Series that is pre-prepared to a post & core form. Also, the A12 tooth models which have a root canal allows for post & core preparation up to abutment fabrication.

Operative Jaw Model (32 teeth)

[CON2001-UL-SP-FEM-32]

- Basic yet comprehensive training model
- Soft type replaceable gingiva – 2 types to choose from (pink, pink for silicone impression taking)
- A wide variety of operative training is possible
- A wider facial gingival area compared to the PRO2001 allows you to practice various operative techniques

Articulator

FE CON2001-UL-SP-FEM-32 D CON2001-UL-SP-DM-32

DP CON2001-UL-SP-DPM-32 NON CON2001-UL-SP-M-32

Replacement Parts

TOOTH Simple Root Tooth Model / A5A-200 Parts : 32 teeth

GINGIVA CON2001-GUL-SP-32

Variation



Operative Jaw Model (32 teeth) [CON2001-UL-UP-FEM-32]

Articulator

FE CON2001-UL-UP-FEM-32 D CON2001-UL-UP-DM-32

DP CON2001-UL-UP-DPM-32 NON CON2001-UL-UP-M-32

Replacement Parts

TOOTH Simple Root Tooth Model / A5A-200 Parts : 32 teeth

GINGIVA CON2001-GUL-UP-32



Prosthetic Restoration Jaw Model (32 teeth) [CON2001-UL-HD-FEM-32]

Articulator

FE CON2001-UL-HD-FEM-32 D CON2001-UL-HD-DM-32

DP CON2001-UL-HD-DPM-32 NON CON2001-UL-HD-M-32

Replacement Parts

TOOTH Simple Root Tooth Model / A5A-200 Parts : 32 teeth

* Subgingival practice is not possible.

Training Method	CON2001-UL-SP-FEM-32	CON2001-UL-UP-FEM-32	CON2001-UL-HD-FEM-32
Abutment tooth preparation	<input type="radio"/>	<input type="radio"/>	<input type="radio"/>
Cavity preparation	<input type="radio"/>	<input type="radio"/>	<input type="radio"/>
Personal tooth tray fabrication	<input type="radio"/>	<input type="radio"/>	<input type="radio"/>
Gingival retraction	<input type="radio"/>	<input type="radio"/>	<input type="radio"/>
Alginate combination impression	<input type="radio"/>	<input type="radio"/>	<input type="radio"/>
Silicone impression	<input type="radio"/>	<input type="radio"/>	<input type="radio"/>
Temporary prosthesis fabrication/fitting	<input type="radio"/>	<input type="radio"/>	<input type="radio"/>
Final prosthesis fabrication/fitting	<input type="radio"/>	<input type="radio"/>	<input type="radio"/>

Replacement Parts



Simple Root Tooth Model (Permanent Tooth) [A5A-200]

- Anatomical form crown and a simple straight root design
- Suited for abutment tooth and cavity preparation
- Teeth set comes pre-fitted with the CON 2001 Series jaw model

Parts 18|17|16|15|14|13|12|11|21|22|23|24|25|26|27|28
48|47|46|45|44|43|42|41|31|32|33|34|35|36|37|38

Training Method

Cavity preparation



Gingiva for CON2001-UL-SP

Replacement gingiva

- MODEL NAME
- CON2001-GUL-SP-32



Gingiva for CON2001-UL-UP

Suited for silicone impression taking

- MODEL NAME
- CON2001-GUL-UP-32

● Option Parts



Endodontic Tooth Model
[A12A-200]

- A single root tooth model based on the A5A-200 with a pulp chamber and a root canal
- Pulpal walls are stained red to allow easy view of preparation conditions such as during root canal enlargement
- By combining with the CON Series model, you can practice pulp chamber opening, rubber dam attachment, root canal enlargement and root canal filling

Parts

	16	14	11	21	24	26		
	46							

**Anterior teeth and lower premolars have screws penetrating the root canal due to their fixation to the jaw model. Please use the screw-less version teeth if this hinders training. Please use utility wax to attach the screw-less teeth in its socket.*

Training Method			
Opening of the pulp chamber	<input type="radio"/>	Root canal enlargement	<input type="radio"/>
Root canal length measurement	<input type="radio"/>	Root canal filling	<input type="radio"/>



Wedge-shaped Defect Tooth Model
[A25A-UL39B (#23)] [A25A-UR39E (#13)] [A25A-UR49J (#14)]

- A cavity preparation practice tooth model representing a wedge-shaped defect

Parts

		14	13			23		
--	--	----	----	--	--	----	--	--

Training Method	
Cavity preparation	<input type="radio"/>



Endodontic Tooth Model
[S12A-200]

- Pulp chamber and root canal are stained red
- The root portion is transparent so it is easy to check the preparation condition

Parts

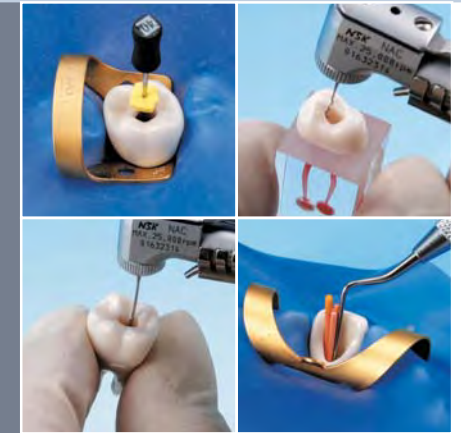
	16	14	11	21	26		
	46						

**Anterior teeth and lower premolars have screws penetrating the root canal due to their fixation to the jaw model. Please use the screw-less version teeth if this hinders the training. Please use utility wax to attach the screw-less teeth in its socket.*

Training Method			
Opening of the pulp chamber	<input type="radio"/>	Root canal enlargement	<input type="radio"/>
Root canal length measurement	<input type="radio"/>	Root canal filling	<input type="radio"/>

A Wide Variation of Endo Model Series for Mastering the Endodontics Area.

The Endo Model Series offers a wide variety of choices according to the purpose and level, allowing fast and easy mastering of root canal treatment techniques. By using these models, you can understand various preparation methods as well as characteristics of instruments such as reamers, while experiencing the feeling during removal of pulp chamber roof and root canal enlargements.



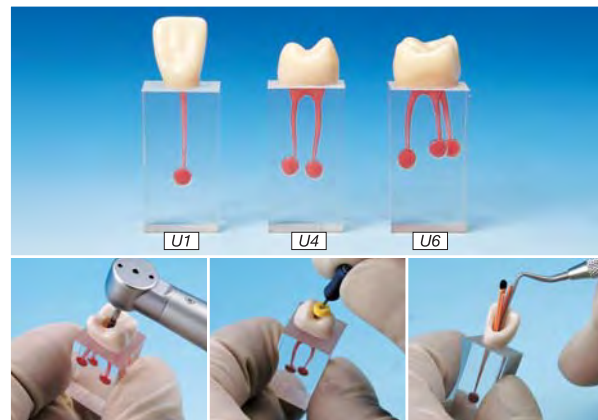
Hand-held Type Practice Models / S Series

The S Series is a model that represents various root canal types inside a transparent block. Models that have only the root canals as well as models with crowns attached allow practicing basic root canal treatment technique methods while experiencing the feeling during root canal preparation.



Jaw model-mounted Type Practice Models / B Series

The natural root form B Series allows for a more clinical root canal treatment practice. Basic models with natural tooth root and root canal are available. The models also allow you to feel the different cutting characteristics and is X-Ray compatible.



Root Canal Model [S7 Series]

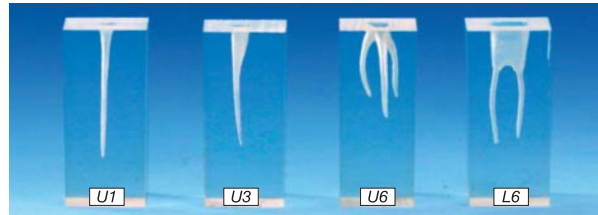
- Pulp chamber and root canal inside a transparent block with a crown attached on top
- A silicone ball is added to the apical foramen to help understand the feeling during perforation
- Suited for preliminary practice of opening the pulp chamber, root canal enlargement and root canal filling
- The pulpal walls are stained red so it is easy to see and check the positioning of the reamers and files

Variation

- Maxillary Central Incisor / S7-U1
- Maxillary First Molar / S7-U6
- Maxillary First Premolar / S7-U4

Training Method		
Opening of the pulp chamber	<input type="checkbox"/>	Root canal enlargement
Root canal length measurement	<input type="checkbox"/>	Root canal filling

Model Variations

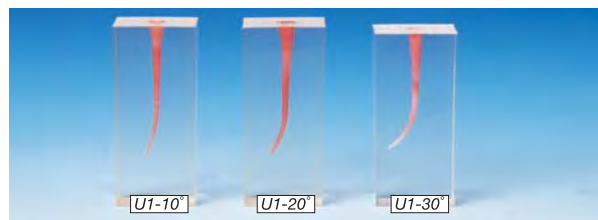


Root Canal Model [S1 Series]

- Various types of unstained root canals available in a transparent block

Variation

- Maxillary Central Incisor / S1-U1
- Maxillary First Molar / S1-U6
- Maxillary Canine / S1-U3
- Mandibular First Molar / S1-L6

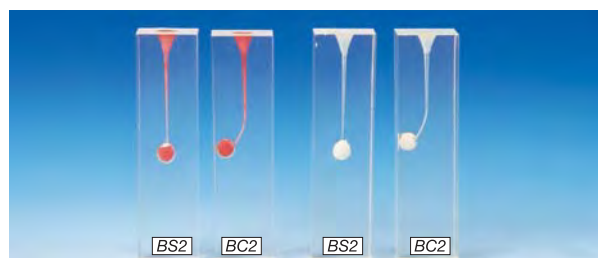


Root Canal Model [S4 Series]

- Various central incisor root canals of differing degree of curvature inside a transparent block
- 3 different degrees of curvature to choose from: 10°, 20°, and 30°

Variation

- 10° curvature / S4-U1-10°
- 20° curvature / S4-U1-20°
- 30° curvature / S4-U1-30°

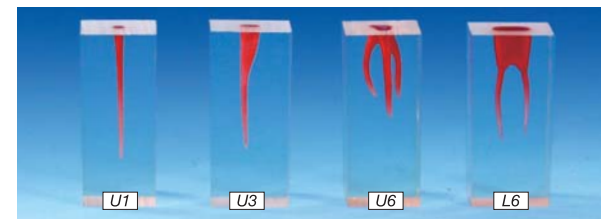


Root Canal Model [S8 Series]

- 2 different types of root canals, straight and curved
- Each type has a stained and unstained version
- A silicone ball is added to the apical foramen to help understand the feeling during perforation

Variation

- | | | | |
|--------------------|-------------------|------------------|-------------------|
| Root canal | •S8-BS2-Stained | Root canal | •S8-BC2-Stained |
| Curvature straight | •S8-BS2-Unstained | Curvature curved | •S8-BC2-Unstained |

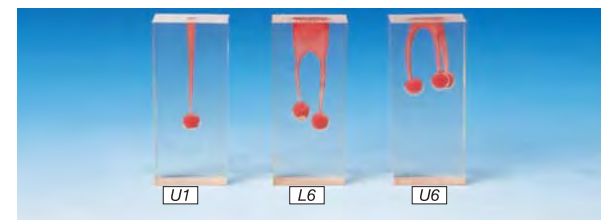


Root Canal Model [S2 Series]

- Various types of red-stained root canals available in a transparent block

Variation

- Maxillary Central Incisor / S2-U1
- Maxillary First Molar / S2-U6
- Maxillary Canine / S2-U3
- Mandibular First Molar / S2-L6

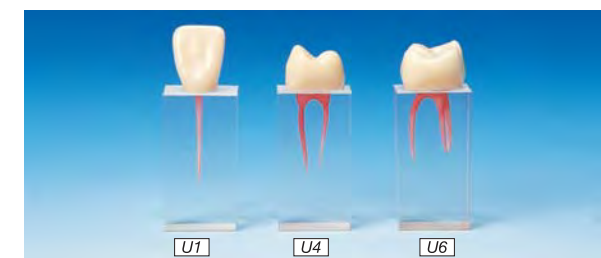


Root Canal Model [S6 Series]

- Various types of root canals in a transparent block
- A silicone ball is added to the apical foramen to help understand the feeling during perforation

Variation

- Maxillary Central Incisor / S6-U1
- Mandibular First Molar / S6-L6
- Maxillary First Molar / S6-U6



Root Canal Model [S3 Series]

- Pulp chamber and root canal inside a transparent block with a crown attached on top
- Suited for preliminary practice of opening the pulp chamber, root canal enlargement and root canal filling
- The pulpal walls are stained red so it is easy to see and check the positioning of the reamers and files

Variation

- Maxillary Central Incisor / S3-U1
- Maxillary First Premolar / S3-U4
- Maxillary First Molar / S3-U6



Anatomical Pulp Cavity & Root Model [B22X Series]

- A natural root form tooth model with anatomical pulp cavity
- X-ray imaging ability
- Difference in cutting feel between the enamel and the dentin material similar to natural teeth
- Electric root canal measuring can be done when combined with the jaw model shown below

Training Method		
Opening of the pulp chamber	<input type="checkbox"/>	Root canal enlargement
Root canal length measurement	<input type="checkbox"/>	Root canal filling

*Measured using X-Ray method

Related Products



Root Canal Length Measurement Model [CON1001-UL-HD]

- Allows training using electric root canal length measuring method
- Practice can be done using natural human teeth or B22X Series model teeth along with an electrical conductive paste

Training Method	
Root canal length measurement	<input type="checkbox"/>

*Some teeth may not fit due to its shape.
*Measured using electric apex probe.



Electric Conductive Paste [NP-1]

- Possesses electrical conductivity made exclusively for the Root Canal Length Measurement Model

Volume
12g

How to use the Root Canal Length Measurement Model

- Perform pulp chamber perforation on the tooth model and clean the inside of the root canal.
- Apply the NP-1 paste to the apical foramen area of the tooth model and let it dry for about half a day.
- Fill the NP-1 paste so that it completely covers the metal plate on the bottom of the model.
- Plant the prepared tooth model into the jaw model and fix it with utility wax.
- Connect the cord supplied with the jaw model to the root canal length probe.
- Connect the cord to the jaw model. Setup is complete.
- Measure the root canal length by following instructions on the instruction manual of the probe.

* Natural human teeth can be used with this model.
* Some teeth may not fit due to its shape.



Periodontal Area



Scaling · Root Planing Area P54



Periodontal Surgery Area P57



Plaque Control Area P58

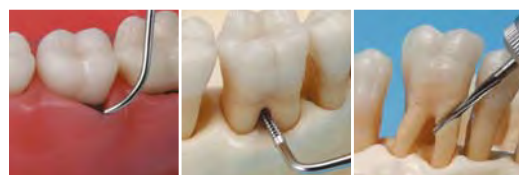
The PER (Periodontics) Series. A Wide Variation for Mastering the Scaling and Root Planing Area.

The PER Series has a wide selection of models that have altered tooth root forms, gingiva and alveolar bone conditions, and you can make your choices according to the training purpose and level. By applying artificial dental calculus to the model you can do a more clinical SRP practice.



Simple Root Tooth Model with a Furcation Defect

The PER2001 Series has a root furcation tooth model attached to the molar region and allows practice of the root furcation region. The alveolar bone has horizontal resorption as well as vertical resorption such as furcation defect and dehiscence bone defects so that subgingival practice is possible.



Treatment of Furcation Involvement

The PER1001 Model provides practice presuming the treatment of furcation involvement such as furcation diagnosis, furcation plasty, and tunnel preparation, by the use of tooth models with root furcation and alveolar bone area with vertical bone defect. Also, you can do practice such as trisection presuming root amputation and hemisection.



SRP Jaw Model [PER2001-UL-SP-FEM-32]

- Basic dental hygiene training model, ideal for learning beginning techniques for treating periodontal diseases
- Resorption and other bone defects on the entire alveolar bone allowing subgingival probing, scaling and root planing practice
- Furcated molars allow furcation lesion treatments in the posterior region
- Recessions have been added to the gingival area allowing plaque control practice on the gingival lesion

Articulator

FE PER2001-UL-SP-FEM-32 **D** PER2001-UL-SP-DM-32
DP PER2001-UL-SP-DPM-32 **NON** PER2001-UL-SP-M-32

Replacement Parts

TOOTH Simple Root Tooth Model / A5A-200

18 17	15 14 13 12 11	21 22 23 24 25	27 28
48 47	45 44 43 42 41	31 32 33 34 35	37 38

Root Furcation Tooth Model / A2A-700

16	26
46	36

GINGIVA PER2001-GUL-SP-32

•Variation



SCP
SRP Jaw Model [PER2001-UL-SCP-FEM-32]

Articulator

FE PER2001-UL-SCP-FEM-32
D PER2001-UL-SCP-DM-32
DP PER2001-UL-SCP-DPM-32
NON PER2001-UL-SCP-M-32

Replacement Parts

TOOTH Simple Root Tooth Model / A5A-200

18 17	15 14 13 12 11	21 22 23 24 25	27 28
48 47	45 44 43 42 41	31 32 33 34 35	37 38

Root Furcation Tooth Model / A2A-700

16	26
46	36

GINGIVA PER2001-GUL-SCP-32



SC
SRP Jaw Model [PER2001-UL-SC-FEM-32]

Articulator

FE PER2001-UL-SC-FEM-32
D PER2001-UL-SC-DM-32
DP PER2001-UL-SC-DPM-32
NON PER2001-UL-SC-M-32

Replacement Parts

TOOTH Simple Root Tooth Model / A5A-200

18 17	15 14 13 12 11	21 22 23 24 25	27 28
48 47	45 44 43 42 41	31 32 33 34 35	37 38

Root Furcation Tooth Model / A2A-700

16	26
46	36

GINGIVA PER2001-GUL-SC-32

Training Method	PER2001-UL-SP-FEM-32	PER2001-UL-SCP-FEM-32	PER2001-UL-SC-FEM-32
Probing	<input type="radio"/>	<input type="radio"/>	<input type="radio"/>
Exploring *1	<input type="radio"/>	<input type="radio"/>	<input type="radio"/>
Scaling *1	<input type="radio"/>	<input type="radio"/>	<input type="radio"/>
Root Planing *1	<input type="radio"/>	<input type="radio"/>	<input type="radio"/>
Tooth surface polishing	<input type="radio"/>	<input type="radio"/>	<input type="radio"/>
Plaque control *2	<input type="radio"/>	<input type="radio"/>	<input type="radio"/>
Alginate combination impression	<input type="radio"/>	<input type="radio"/>	<input type="radio"/>
Silicone impression	<input type="radio"/>	<input type="radio"/>	<input type="radio"/>

*1 when doing practice by combining with the Dental Calculus Set
 *2 when doing practice by combining with Artificial Plaque

•Replacement Parts



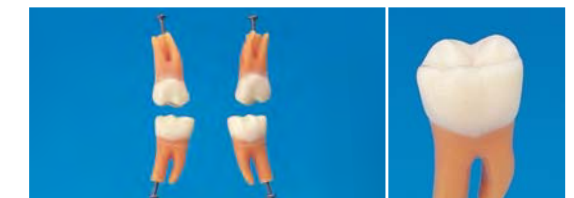
Simple Root Tooth Model (Permanent Tooth) [A5A-200]

- Anatomical form crown and a simple straight root design
- Teeth set comes pre-fitted with the PER2001 jaw model

Parts

18 17	15 14 13 12 11	21 22 23 24 25	27 28
48 47	45 44 43 42 41	31 32 33 34 35	37 38

Training Method	
Exploring	<input type="radio"/>
Scaling	<input type="radio"/>



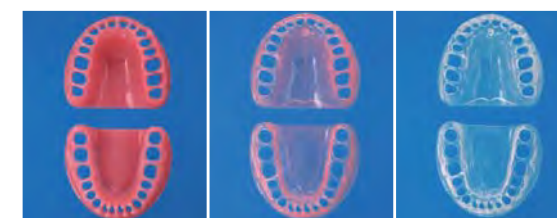
Root Furcation Tooth Model [A2A-700]

- Anatomical root with a furcation area
- Teeth set comes pre-fitted with the PER2001 jaw model
- Made from a softer material than the A5A tooth model

Parts

16	26
46	36

Training Method	
Exploring	<input type="radio"/>
Scaling	<input type="radio"/>



Gingiva for PER2001-UL

3 different colors to choose from

MODEL NAME

- Pink (PER2001-GUL-SP-32)
- Clear pink (PER2001-GUL-SCP-32)
- Clear (PER2001-GUL-SC-32)



Periodontal Jaw Model [PER2002-UL-SP-FEM-28]

- Periodontally involved training model allowing comprehensive practice of various periodontal treatment techniques
- Advanced periodontal disease seen throughout the model such as hypoplasia, gingival cleft and gingival recession
- Edentulous lower left 1st molar with a super-erupted upper left 1st molar
- Dental calculus present on most teeth for calculus removal practice
- The upper left posterior region shows post-surgical condition for comparison

Articulator

FE PER2002-UL-SP-FEM-28 **D** PER2002-UL-SP-DM-28
DP PER2002-UL-SP-DPM-28 **NON** PER2002-UL-SP-M-28

Replacement Parts

TOOTH Root Furcation Tooth Model with calculus / B1A-004
GINGIVA PER2002-GUL-SP-28

Training Method		
Probing	<input type="checkbox"/>	Tooth surface polishing <input type="checkbox"/>
Exploring *1	<input type="checkbox"/>	Plaque control *2 <input type="checkbox"/>
Scaling *1	<input type="checkbox"/>	Alginate combination impression <input type="checkbox"/>
Root Planing *1	<input type="checkbox"/>	Silicone impression <input type="checkbox"/>

*1 when doing practice by combining with the Dental Calculus Set
 *2 when doing practice by combining with Artificial Plaque

Replacement Parts



Anatomical Simple Root Tooth Model [B1A Series]

- 2-colored tooth model with dental calculus
- Anatomical root form on 2/3 of the root with root furcations
- Made from a softer material than the A5A tooth model
- Comes pre-fitted with the PER2002 model

Parts

17	16	15	14	13	12	11	21	22	23	24	25	26	27
47	46	45	44	43	42	41	31	32	33	34	35	37	

Option



Dental Calculus Set

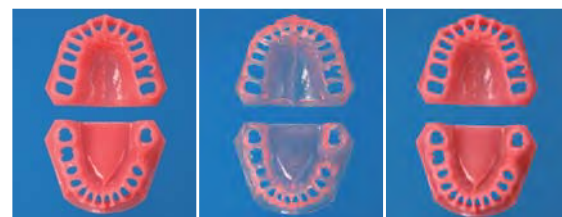
- Room temperature curing artificial dental calculus
- Provides good workability and moderate adhesion to the tooth model
- 2 colors included in the set, dark and light gray

Contents

Powder A (dental calculus color) 8g, Powder B (dark gray) 8g, Liquid material 25mL, Brush 2, glass cup 2, Sand paper

Separately Sold Items

- Powder A (light gray) 8g
- Powder B (dark gray) 8g
- Liquid 25mL
- Brush 2
- Glass cup 1



Gingiva for PER2002-UL

- 3 different types to choose from

MODEL NAME

- Pink (PER2002-GUL-SP-28)
- Clear pink (PER2002-GUL-SCP-28)
- Nylon fiber (realistically mimics gingival tissue) (PER2002-GUL-FP-28)



Dental Calculus Tube

- Calculus comes ready in paste form
- The calculus color is black
- Tube design allows easy application of dental calculus
- Paste takes 24 hours to harden

The PER (Periodontics) Surgery Series presuming various lesion conditions for mastering the Periodontal Surgery Area.



Periodontal Jaw Model [PER1001-UL-SP-FEM-32]

- Designed for comprehensive periodontal surgery training, but also allows SRP and other periodontal treatment practice
- Model represents severe periodontal disease condition
- Fitted with furcated anatomical teeth with calculus, having excessive wear representing an aged person

Articulator

FE PER1001-UL-SP-FEM-32 **D** PER1001-UL-SP-DM-32
DP PER1001-UL-SP-DPM-32 **NON** PER1001-UL-SP-M-32

Replacement Parts

TOOTH Anatomical Single Root Tooth Model / B1A-901C
GINGIVA PER1001-GUL-SP-32

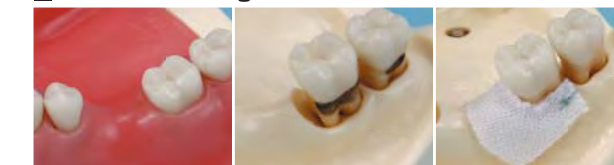
Training Method		
Flap surgery	<input type="checkbox"/>	Root amputation <input type="checkbox"/>
Guided tissue regeneration method	<input type="checkbox"/>	Tunnel preparation <input type="checkbox"/>
Osteoplasty	<input type="checkbox"/>	Probing <input type="checkbox"/>
Furcation plasty	<input type="checkbox"/>	SRP <input type="checkbox"/>

Flap Surgery



You can do incision, osteoplasty, and suture practice using various methods presuming flap surgery. Also, since the tooth models are pre-prepared with dental calculus, you can do root planing presuming post-granulation tissue removal.

Guided Tissue Regeneration Method



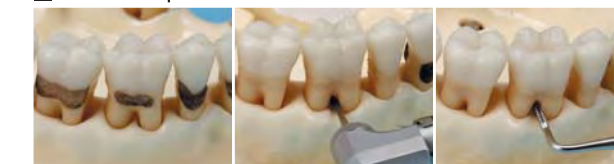
Has bone defects on the alveolar bone, and root planing practice presuming guided tissue regeneration method treatment as well as establishing membranes is possible.

Root Amputation



Class III furcation involvement is provided on #16, #26, #46, and allows hemisection and trisection presuming root amputation.

Tunnel Preparation



On #16, #27, furcation involvement presuming Class III is provided, thus it is possible to do tunnel preparation which performs recontouring on the alveolar bone.

Replacement Parts



Anatomical Simple Root Tooth Model [B1A-901C]

- 2-colored tooth model with dental calculus
- Anatomical root form on 2/3 of the root with root furcations
- Made from a softer material than the A5A tooth model
- Comes pre-fitted with the PER1001 model

Parts

18	17	16	15	14	13	12	11	21	22	23	24	25	26	27	28
48	47	46	45	44	43	42	41	31	32	33	34	35	37	38	



Gingiva for PER1001-UL

- 2 different colors to choose from

MODEL NAME

- Pink (PER1001-GUL-SP-32)
- Clear pink (PER1001-GUL-SCP-32)

Plaque Control Model Series for Mastering Brushing Techniques

The Plaque Control Series offers models that are fitted with anatomical form tooth models, as well as clinically close models that have crowding dentition and implants so you can practice various techniques. By applying artificial dental plaque to these models, you can quickly understand brushing and flossing techniques as you experience the amount of plaque removal.



Brushing Instruction Model [PE-STP001]

- Jaw model with crowded dentition, partially erupted tooth and implant restoration
- Various brushing and flossing techniques can be practiced
- Plaque removal practice can be done by applying the optional artificial plaque

Training Method			
Brushing	<input type="checkbox"/>	Tooth surface polishing	<input type="checkbox"/>
Flossing	<input type="checkbox"/>		

Option

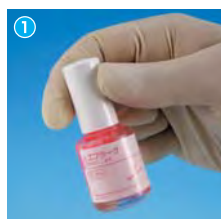


Artificial Plaque

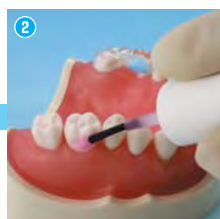
- Manicure type artificial dental plaque
- The pink colored plaque makes it easy to see the remaining unbrushed areas

Capacity 8mL

How to use the Artificial Plaque



1 Shake the bottle well so the contents are mixed evenly.



2 Apply to the tooth model surface using the brush.



3 Let it dry for about 5 minutes.



4 Conduct brushing practice.

Other Training Areas



Oral Surgery Area

P60



Anesthesia Area

P62



Radiation Area

P63



Orthodontics Area

P64



Pediatric Area

P68